

**vtech®**

# Parent's Guide

## ***5-in-1 Stroll & Grow Trike***

**9 Months  
to  
6 Years**



**VTech understands that a child's needs and abilities change as they grow and with that in mind we develop our toys to teach and entertain at just the right level...**

## **E**lectronic Learning Computers

**Cool, aspirational and inspiring computers for curriculum related learning**

## **Pre-School**

**Interactive toys to develop their imagination and encourage language development**

## **vtech Baby**

**Toys that will stimulate their interest in different textures, sounds and colours**

### **I am...**

...responding to colours, sounds and textures

...understanding cause and effect

...learning to touch, reach, grasp, sit-up, crawl and toddle

### **I want...**

...to get ready for school by starting to learn the alphabet and counting

...my learning to be as fun, easy and exciting as can be

...to show my creativity with drawing and music so my whole brain develops

### **I need...**

...challenging activities that can keep pace with my growing mind

...intelligent technology that adapts to my level of learning

...National Curriculum based content to support what I'm learning at school

*Birth-36 months*

*3-6 years*

*4-10 years*



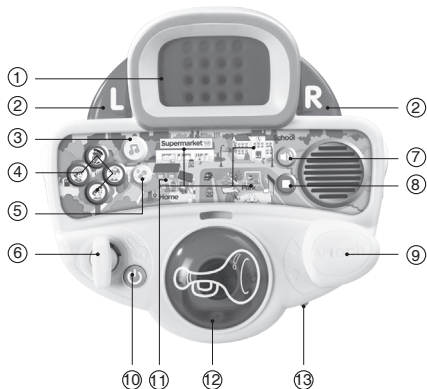
To learn more about this and other VTech® products, visit [www.vtech.co.uk](http://www.vtech.co.uk)

# INTRODUCTION

Thank you for purchasing the **VTech® 5-in-1 Stroll & Grow Trike**.

Through interactive riding, your child can role-play and enjoy cheerful melodies and sing-along songs. With the interactive panel and four trike stage settings, your child will enjoy endless riding fun!

- |                          |                     |
|--------------------------|---------------------|
| ① LIGHT UP DISPLAY       | ⑧ MUSIC STOP BUTTON |
| ② LEFT/RIGHT LED         | ⑨ GEAR STICK        |
| ③ MELODY BUTTON          | ⑩ ON/OFF BUTTON     |
| ④ ROLE-PLAY BUTTONS      | ⑪ LOCATION BUTTONS  |
| ⑤ SING-ALONG SONG BUTTON | ⑫ HORN BUTTON       |
| ⑥ IGNITION SWITCH        | ⑬ MODE SELECTOR     |
| ⑦ VOLUME BUTTON          |                     |



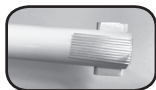
# SAFETY WARNINGS

## WARNING:

All packing materials, such as tape, plastic sheets, packaging locks, removable tags, cable ties and packaging screws are not part of this toy, and should be discarded for your child's safety.

## NOTE:

Please keep this parent's guide as it contains important information.



All tape and cardboard are not part of this toy, and should be discarded for your child's safety.

## WARNING:

- This toy should be used in a safe area e.g. indoors, in a private garden, on level flat surfaces and away from any hazards such as cars, stairs, water etc.
- Not for use on pavements or in traffic.
- Adult supervision is advised.
- Please help your child to sit properly on the seat and to use the toy correctly.
- This toy should be used with caution since skill is required to avoid falls or collisions causing injury to the user or third parties.
- Protective equipment should be worn.
- Maximum weight 25.4 kg.
- Please wear bike helmet, gloves, knee pads and elbow pads. (Not included).
- Maximum permissible load of storage bin is 3 kg, excessive weight may cause hazardous or unstable conditions.
- Going up or down stairs whilst a child is in the trike may lead to falls and possible serious injury. Height-adjustable push handle is not intended to support the weight of the trike and rider. Child must be removed from the trike before transporting up or down stairs.

## NOTE:

Regularly check for signs of wear or tear on the snap in or locking devices. If damaged do not use until repaired or replaced. Only to be used under the direct supervision of a competent adult.

For your child's safety, please keep the removed accessories far away from your child.

## WARNING:

Adult assembly required. Choking hazard to children under the age of 3 years – contains small parts prior to assembly.

Warning. Keep away from fire.

## DRIFT STAGE: USE WITH CAUTION

When using the 5-in-1 Stroll & Grow Trike in drift stage, riders and guardians should use at their own risk and exercise common sense. It is possible to lose control, fall off and/or get into unsafe situations.

Keep an eye out for obstacles and situations that could force you to unexpectedly swerve or lose control. Hold the handlebars at all times. Do not hitch a ride on a vehicle at any time. Avoid riding on uneven or unsafe surfaces. We advise you to ride on solid, flat, level ground. Do not use indoors.

The recommended rider age of 4-6 years for the drift stage is a suggestion. Any rider unable to comfortably fit on the 5-in-1 Stroll & Grow Trike in drift stage should not attempt to ride it. Parents should make the decision to allow their child to ride based on the child's skill level and abilities.

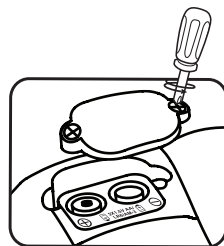
Parents: Please review this guide and ensure that all riders understand the warnings and safety guidelines to safely use the 5-in-1 Stroll & Grow Trike.



# GETTING STARTED

## BATTERY INSTALLATION

1. Make sure the unit is turned **OFF**.
2. Use a screwdriver to loosen the screw and open the battery cover.
3. Install 2 new AA size (LR6/AM-3) batteries following the diagram inside the battery box. (The use of new alkaline batteries is recommended for maximum performance).
4. Replace the battery cover and tighten the screw to secure.



## BATTERY NOTICE

- Use new alkaline batteries or fully charged NI-MH (Nickel Metal-hydride) rechargeable batteries for best performance.
- Use only batteries of the same or equivalent type as recommended.
- Do not mix different types of batteries: alkaline, standard (carbon-zinc) or rechargeable, or new and used batteries.
- Do not use damaged batteries.
- Insert batteries with the correct polarity.
- Do not short-circuit the battery terminals.
- Remove exhausted batteries from the toy.
- Remove batteries during long periods of non-use.
- Do not dispose of batteries in fire.
- Do not charge non-rechargeable batteries.
- Remove rechargeable batteries from the toy before charging (if removable).
- Rechargeable batteries are only to be charged under adult supervision.

## Disposal of batteries and product

The crossed-out wheellie bin symbols on products and batteries, or on their respective packaging, indicates they must not be disposed of in domestic waste as they contain substances that can be damaging to the environment and human health.

The chemical symbols Hg, Cd or Pb, where marked, indicate that the battery contains more than the specified value of mercury (Hg), cadmium (Cd) or lead (Pb) set out in Battery Directive (2006/66/EC).

The solid bar indicates that the product was placed on the market after 13th August, 2005.

Help protect the environment by disposing of your product or batteries responsibly.

For more information, please visit:

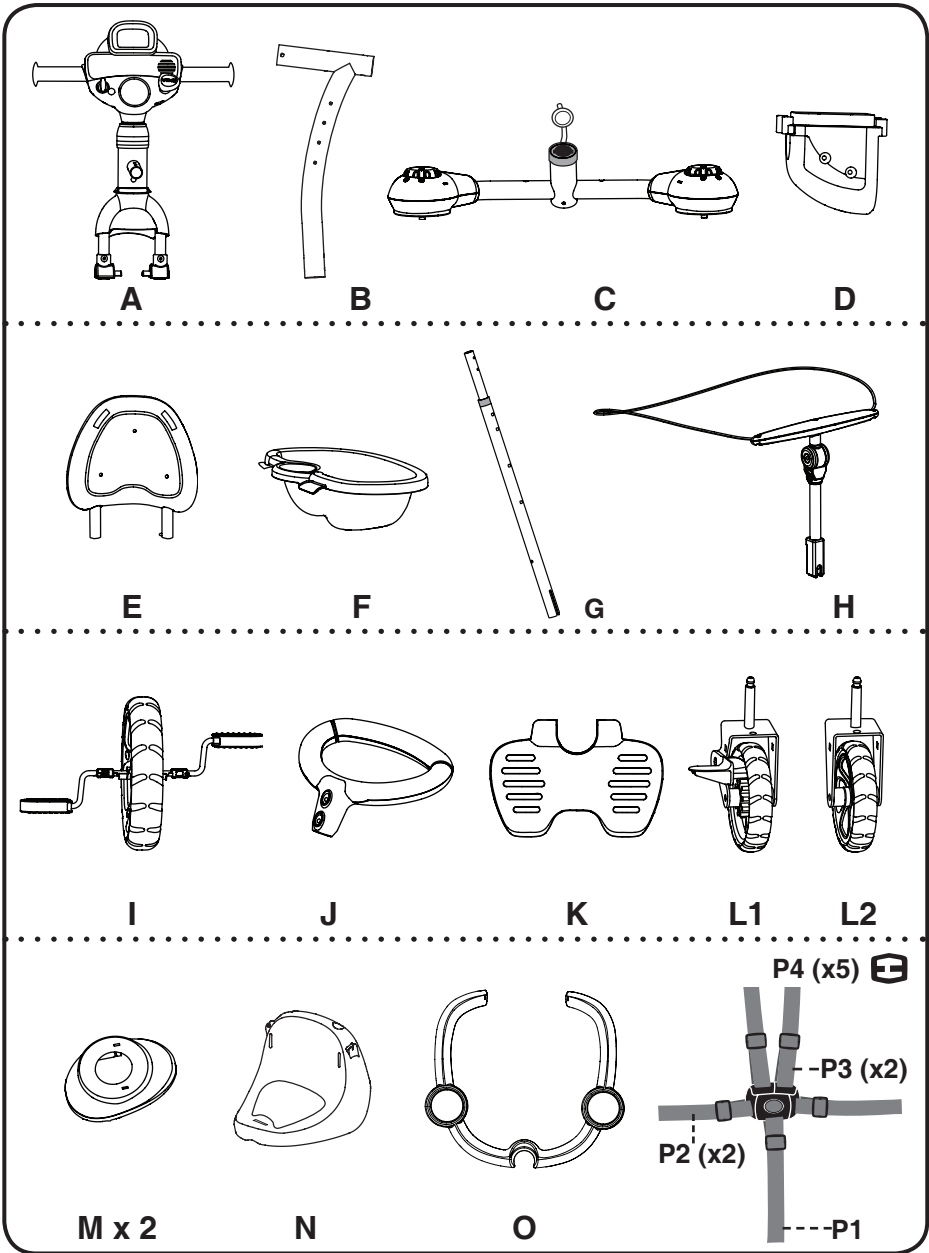
[www.recycle-more.co.uk](http://www.recycle-more.co.uk)

[www.recyclenow.com](http://www.recyclenow.com)



# INCLUDED IN THIS PACKAGE

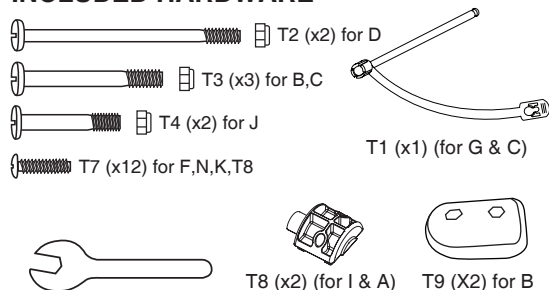
- One VTech® 5-in-1 Stroll & Grow Trike
- One parent's guide



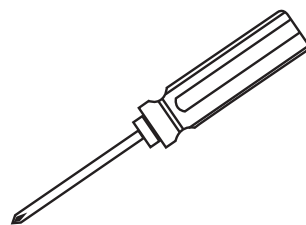
# ASSEMBLY AND SETUP

For additional assistance, watch our assembly video at: [www.vtech.co.uk/tutorials/5in1trike](http://www.vtech.co.uk/tutorials/5in1trike).

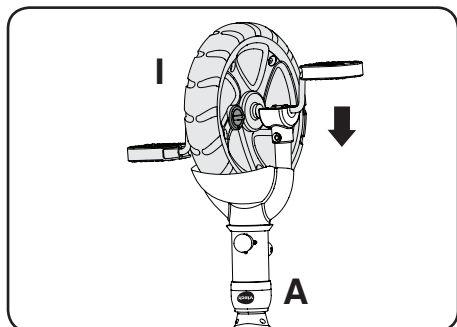
## INCLUDED HARDWARE



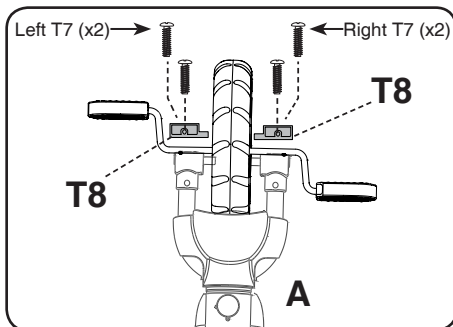
## REQUIRED TOOLS FOR ASSEMBLY



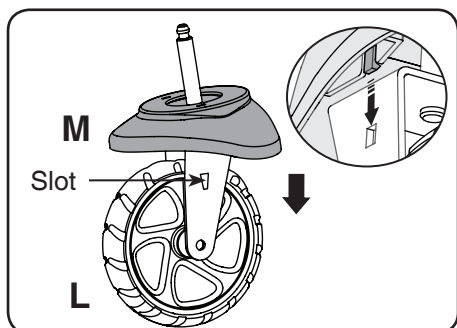
(NOT INCLUDED)



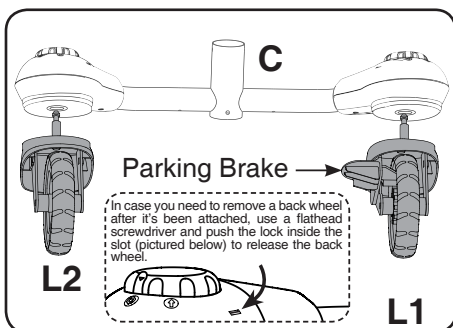
1. Align the front wheel (I) with the slot on the frame (A). The pedal lock should be on the right side of the trike tyre.



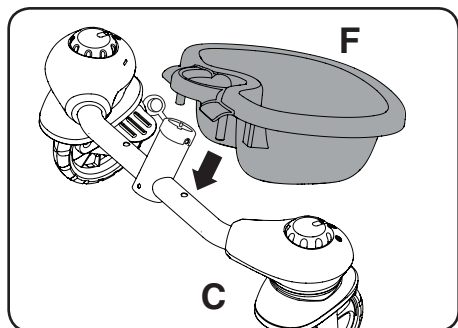
2. Place the cover (T8) over the frame (A) and screw them together with 4 T7 screws. Then, set aside.



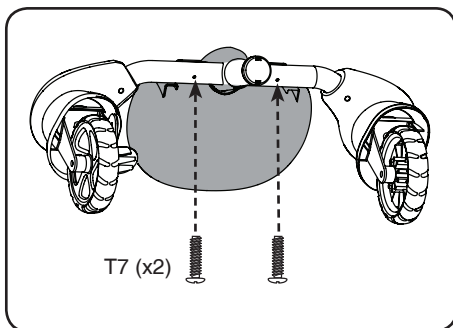
3. Push down the back wheel cover (M) into the slot (L), until it snaps in. Do this twice, once for each wheel.



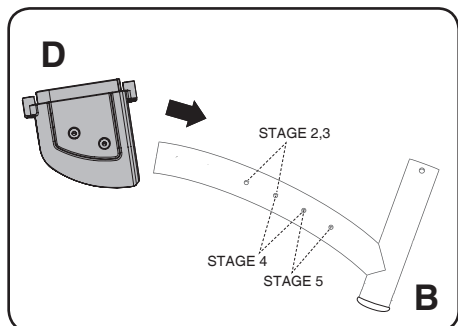
4. Push the right wheel (L1) and left wheel (L2) into the slots of (C). They will lock in. (The right wheel (L1) has a parking brake but the left wheel does not).



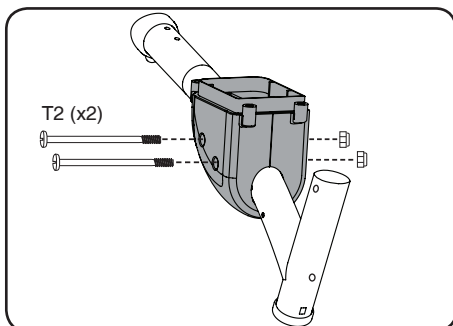
5. Push the storage bin (F) into the frame (C) until it's secure.



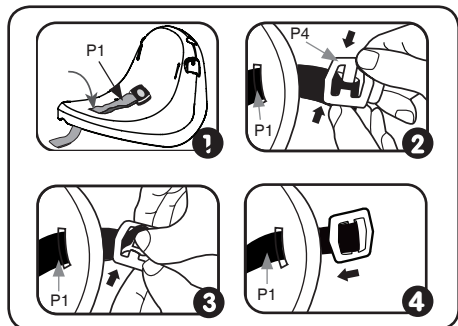
6. Next, screw them together, using 2 T7 screws. Then, set it aside.



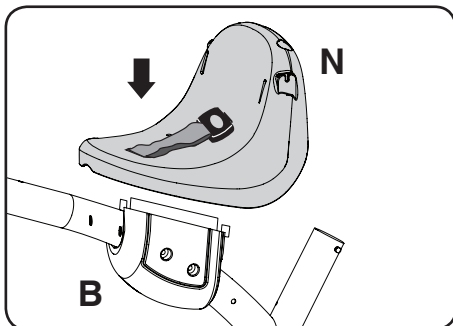
7. Align the opening of (D) with frame (B) and place (D) into Stage 2 of frame (B).



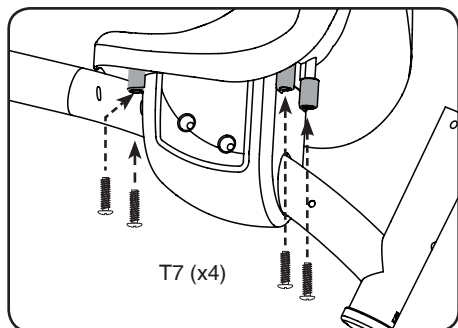
8. Put the nuts in place and then screw the T2 screws into the nuts.



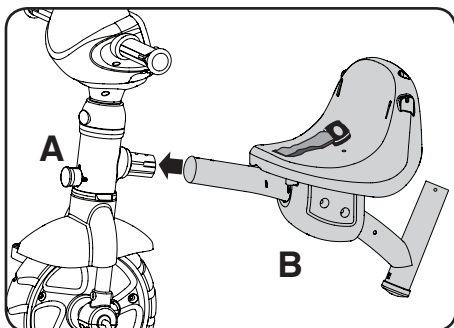
9. Install the seat belt (P1) into the seat (N).



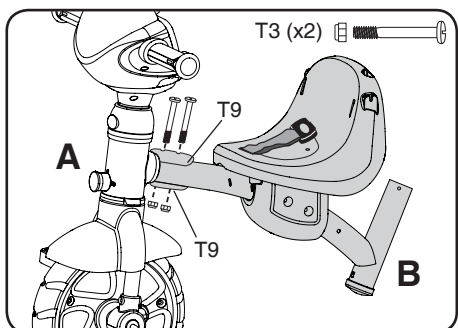
10. Place the seat (N) onto the frame (B).



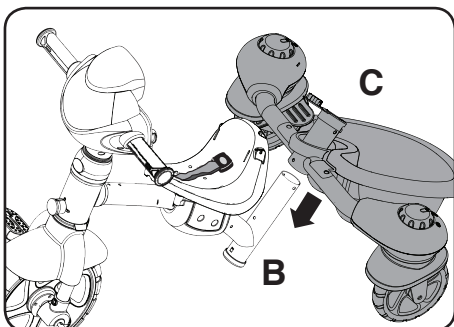
11. Then, screw them together using 4 T7 screws.



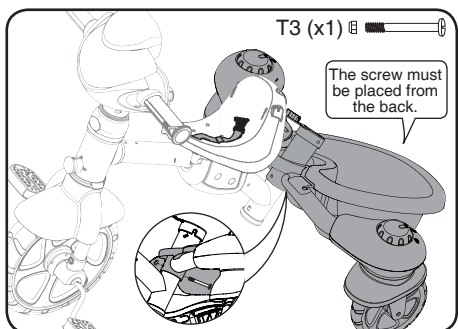
12. Align the opening of frame (B) with frame (A).



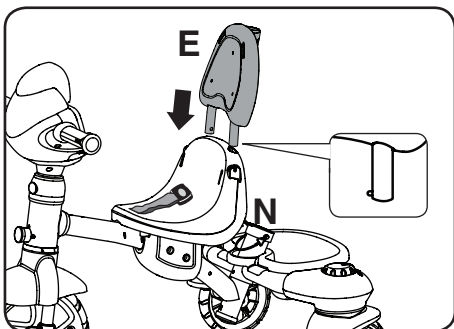
13. Then, attach T9 to frame (B) with 2 T3 screws and nuts.



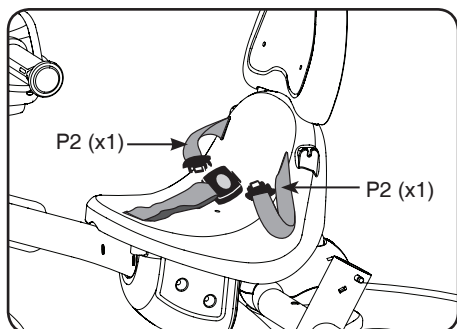
14. Push the frame (C) into the frame (B).



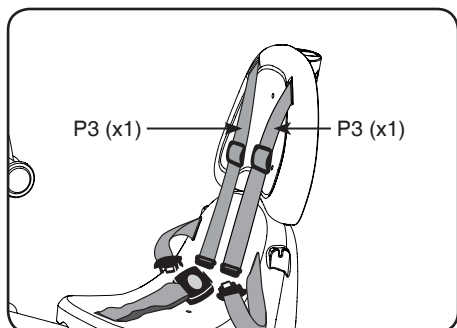
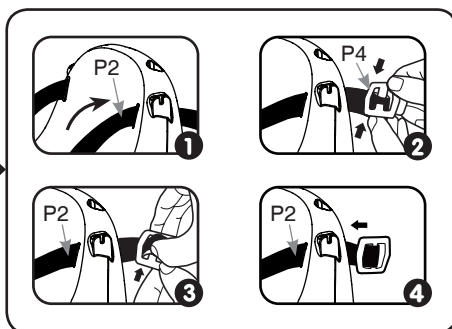
15. Then, attach the T3 screw and nut to secure.



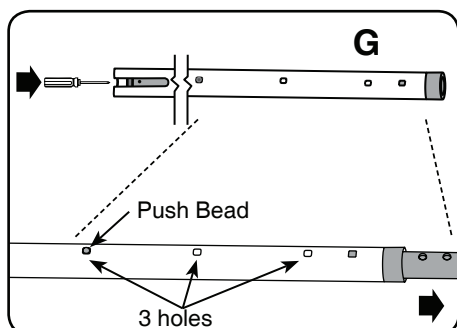
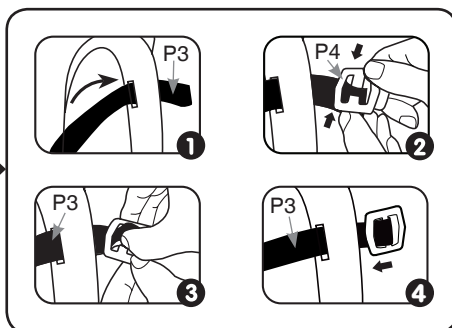
16. Press the push button inward as you push the removable seat back (E) into the seat (N). Then, set aside.



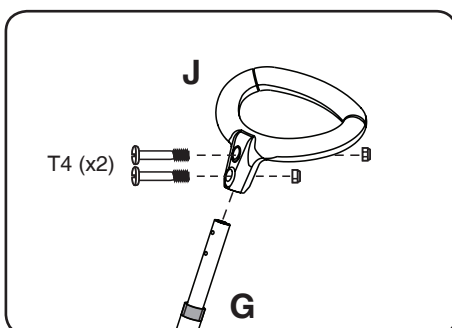
17. Install the seat belts (**P2**) into the seat.



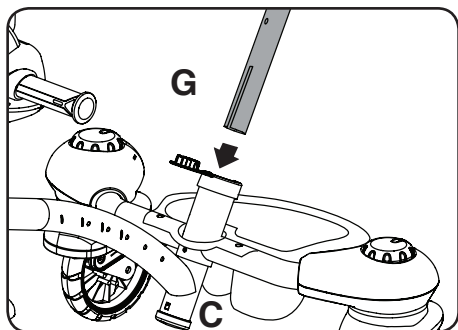
18. Install the seat belts (**P3**) into the removable seat back.



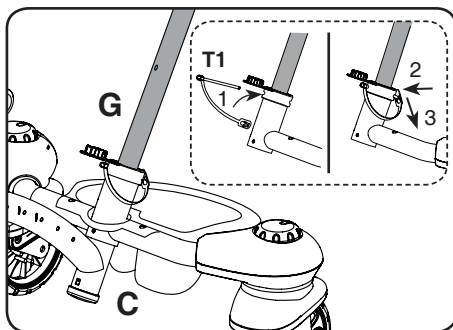
19. Use a screwdriver to push the grey pole inside (**G**) so that the push bead will glide through the white tube to align with the 3 holes.



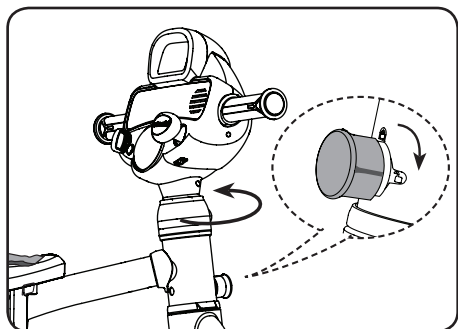
20. Align the handle (**J**) with the bar (**G**). Then, attach 2 **T4** screws and nuts.



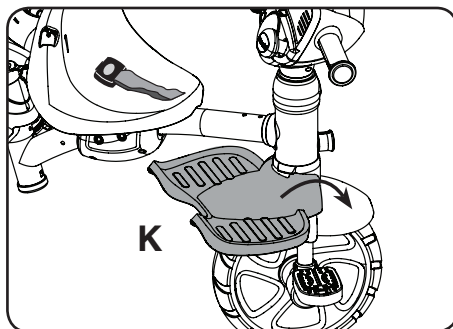
21. Push the push handle (G) down into the hole of frame (C).



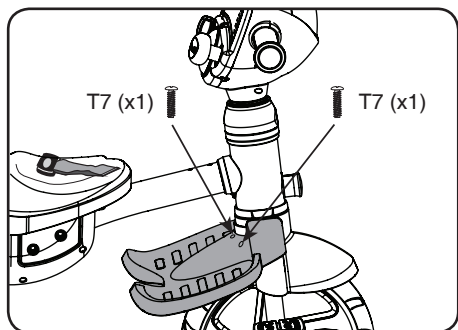
22. Attach the push handle (G) and frame (C) together by inserting (T1).



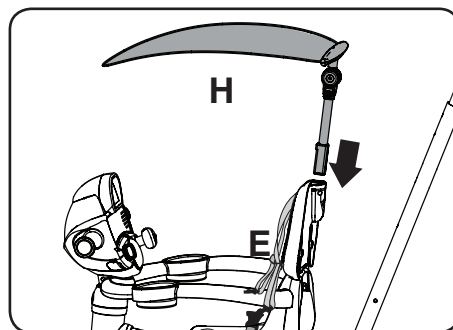
23. To add the footrest to the trike, first, make sure the front steering lock is in the unlock position and turn the handlebars to the trike's left side.



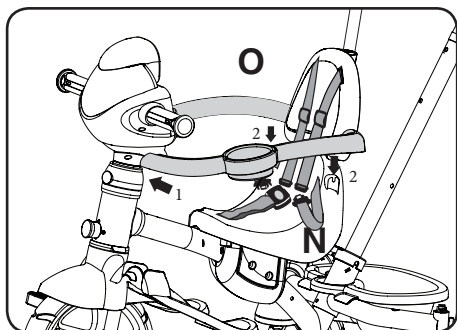
24. Then, put the footrest (K) on top of the trike frame. Ensure the footrest fits snugly under the ridges on the trike frame.



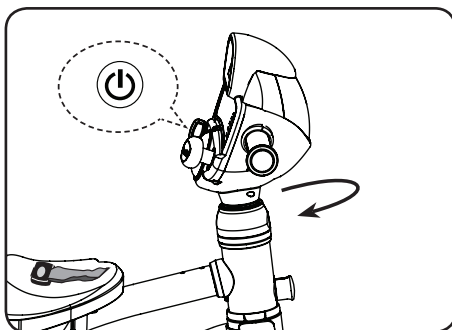
25. Next, turn the handlebars so they are facing forward. Then, attach with 2 T7 screws.



26. Use the push button to insert the canopy (H) into the removable seat back (E).



27. Insert the wraparound safety bar (O) by snapping it to the front of the trike under the interactive panel and into the grooves on the seat (N).



28. Please press the **ON/OFF BUTTON** and turn the handlebars towards the right, then the **5-in-1 Stroll & Grow Trike** is ready to be played on.

## STAGE 1 - Electronic Activity Panel



Features a light up screen and content that evolves with your rider

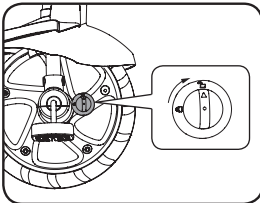
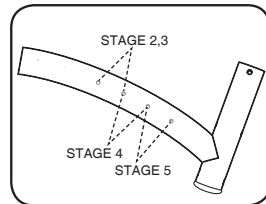
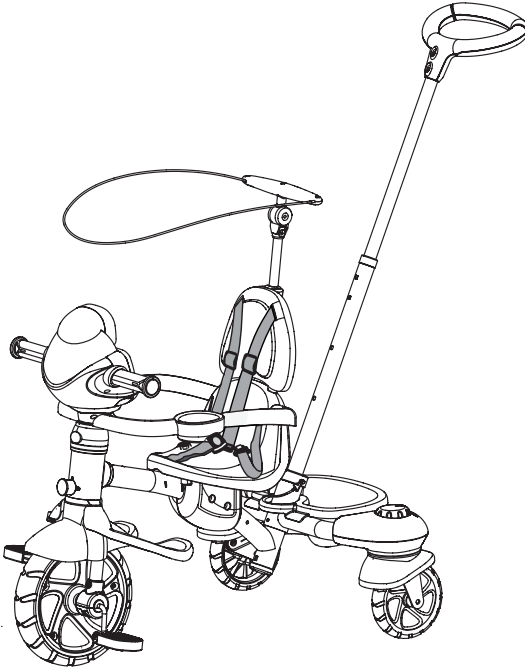


## STAGE 2 - STROLL

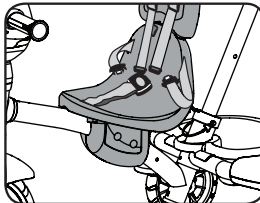
**9+ Months**

**Note:**

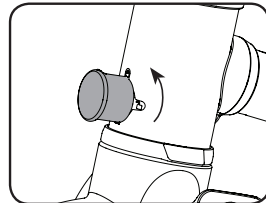
This is a rear wheel steering control stroller, always adjust the moving direction before pushing forward.



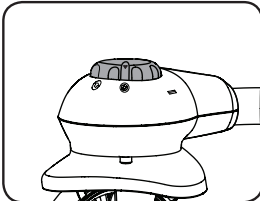
1. Turn the pedal lock clockwise to unlock the pedals. The pedals will not control the movement of the front wheel when the pedals are unlocked.



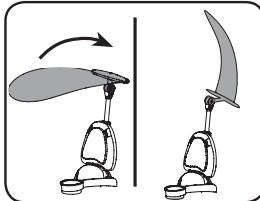
2. Move the seat to the stage 2 position by removing the screws, adjusting the position and then screwing the seat into position.



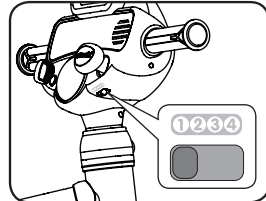
3. Turn the front steering lock anticlockwise to lock the handlebars.



4. Turn the wheel locks to unlock the back swivel wheels.



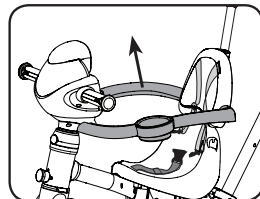
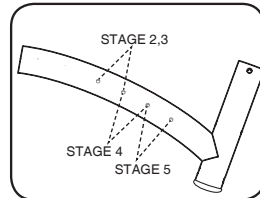
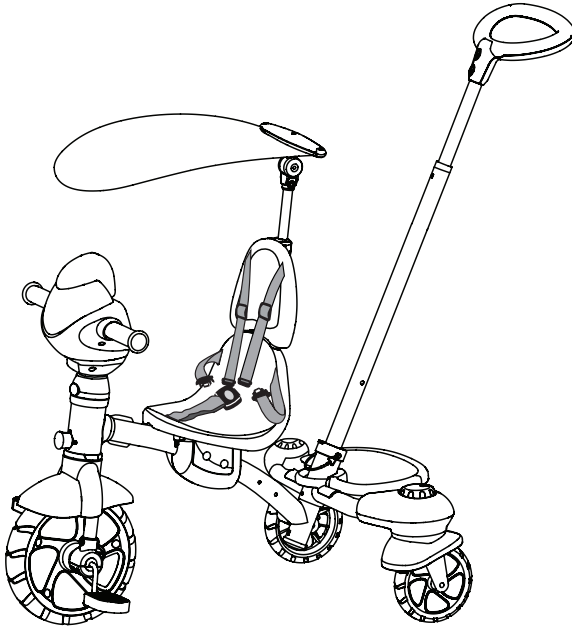
5. Adjust the canopy.



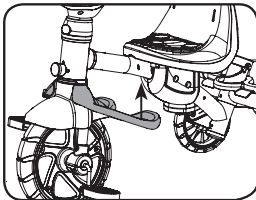
6. Slide the Mode Selector to mode 1 position.

## STAGE 3 - TRAIN

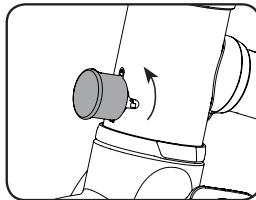
12+ Months



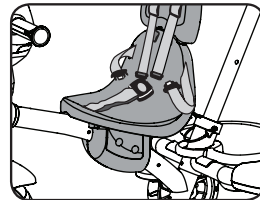
1. Remove the wraparound safety bar.



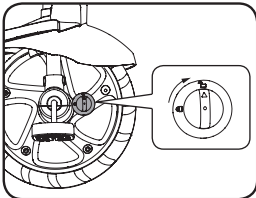
2. Remove the footrest.



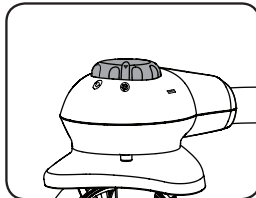
3. Make sure the front steering lock is in the lock position.



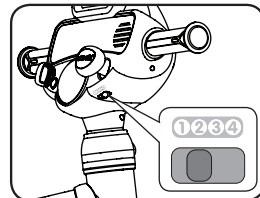
4. Move the seat to the stage 3 position by removing the screws, adjusting the position and then screwing the seat into position.



5. Make sure the pedal lock is in the unlock position. The pedals will not control the movement of the front wheel when the pedals are unlocked.



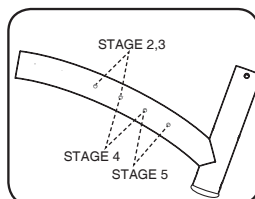
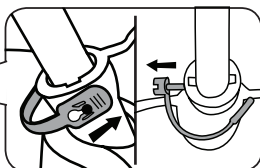
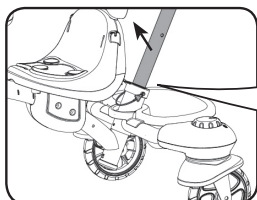
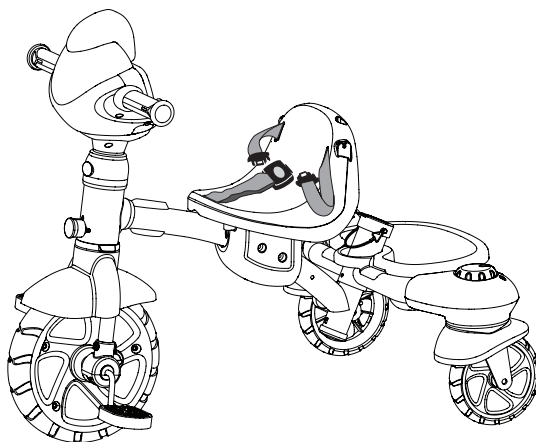
6. Turn the wheel locks to to unlock the back swivel wheels.



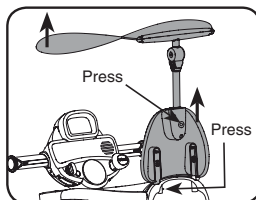
7. Slide the Mode Selector to mode 2 position.

## STAGE 4 - RIDE

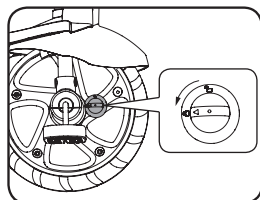
2-4 Years



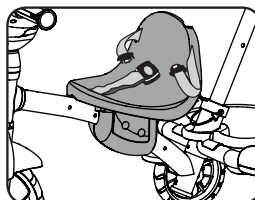
1. Remove the height-adjustable push handle.



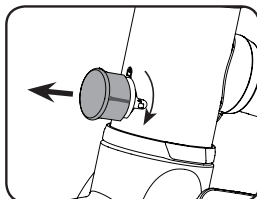
2. Remove the canopy and the removable seat back.



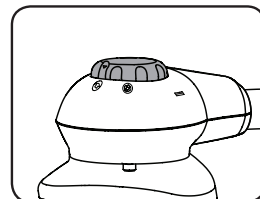
3. Turn the pedal lock anticlockwise to lock the pedals. The pedals will control the movement of the front wheel when the pedals are locked.



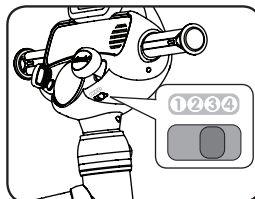
4. Move the seat to the stage 4 position by removing the screws, adjusting the position and then screwing the seat into position.



5. Turn the front steering lock clockwise to unlock the handlebars.



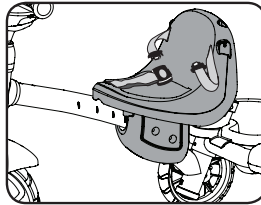
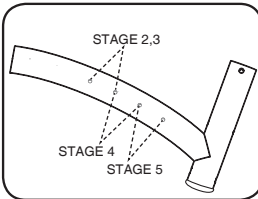
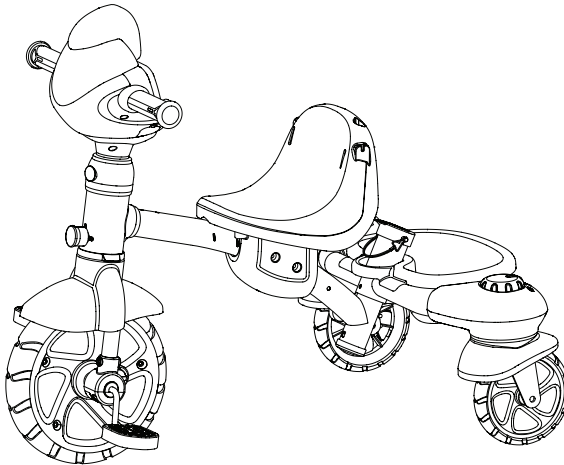
6. Turn the wheel locks to lock the back swivel wheels.



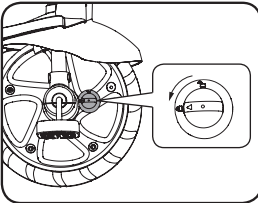
7. Slide the Mode Selector to mode 3 position.

## STAGE 5 - DRIFT

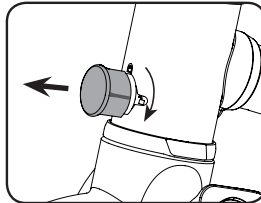
4-6 Years



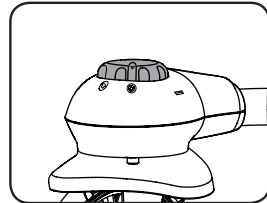
1. Move the seat to the stage 5 position by removing the screws, adjusting the position and then screwing the seat into position.




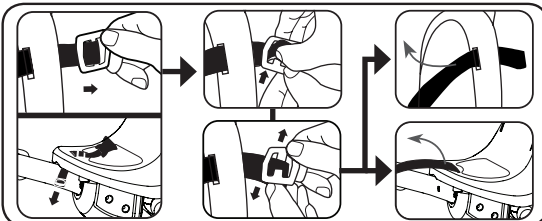
2. Make sure the pedal lock is in the lock position. The pedals will control the movement of the front wheel when the pedals are locked.



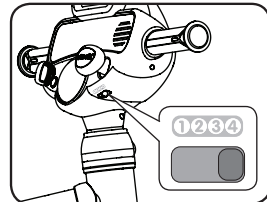
3. Make sure the front steering lock is in the unlocked position.



4. Turn the wheel locks to  to unlock the back swivel wheels to enable drifting.



5. Remove the 5-point safety harness.



6. Slide the Mode Selector to mode 4 position.

## PRODUCT FEATURES

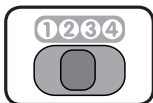
### 1. ON/OFF BUTTON

To turn the unit **ON**, press the **ON/OFF BUTTON**. Press the **ON/OFF BUTTON** again to turn the unit **OFF**.



### 2. MODE SELECTOR

Slide the **MODE SELECTOR** to select a mode. In different modes, the response of Role-Play Buttons and Location Buttons will be different.



### 3. HORN BUTTON

Press the **HORN BUTTON** to see it light up and hear fun sound effects.



### 4. GEAR STICK

Move the **GEAR STICK** up or down to hear fun sound effects.



### 5. IGNITION SWITCH

Turn the **IGNITION SWITCH** to hear a fun sound effect.



### 6. FOUR ROLE-PLAY BUTTONS

Press the **ROLE-PLAY BUTTONS** to hear different phrases from each character.



### 7. LOCATION BUTTONS

Press the **LOCATION BUTTONS** to hear different phrases in different modes.



### 8. MELODY BUTTON

Press the **MELODY BUTTON** to hear melodies.



### 9. SING-ALONG SONG BUTTON

Press the **SING-ALONG SONG BUTTON** to hear sing-along songs.



### 10. VOLUME BUTTON

Press the **VOLUME BUTTON** to adjust the volume.



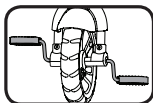
### 11. MUSIC STOP BUTTON

Press the **MUSIC STOP BUTTON** to stop playing sing-along songs or melodies.



### 12. PEDALLING

When there is a melody playing, the melody will play faster or slower depending on the speed that you're pedalling. If pedalling stops, the melodies or sung songs will stop playing; If pedalling is continued within 5 seconds without pressing any other key or turning the handlebars left or right, the melodies or sung songs will continue to play.



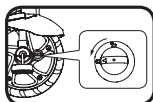
### 13. HANDLEBARS

Turn the handlebars left or right, and the trike will call out which way you're turning. In addition, the corresponding light will flash and it will play a sound effect.



### 14. PEDAL LOCK

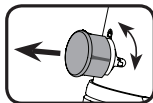
When the **PEDAL LOCK** is in the unlocked position the pedals will not control the movement of the front



wheel. When the **PEDAL LOCK** is in the locked position the pedals will control the movement of the front wheel.

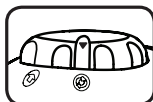
### 15. FRONT STEERING LOCK

When the **FRONT STEERING LOCK** is in the unlocked position the handlebars will be able to move left and right. When the **FRONT STEERING LOCK** is in the locked position the handlebars will not be able to move left and right.



### 16. SWIVEL WHEELS

When the back wheel lock is in the (show 360 symbol from the lock) position, the back wheels can turn 360°. When the back wheel lock is in the (show the straight arrow symbol from the lock) position, the back wheels will only go straight.



### 17. AUTOMATIC SHUT OFF

To preserve battery life, the **5-in-1 Stroll & Grow Trike** will automatically turn off after several minutes of inactivity. The unit can be turned on again by pressing the **ON/OFF BUTTON**.

The unit will also automatically turn off when the batteries are very low.

# MELODY & SONG LIST

## MELODY LIST

1. Alouette
2. The Farmer in the Dell
3. She'll Be Coming Round the Mountain
4. Big Rock Candy Mountain
5. BINGO
6. Camptown Races
7. Here We Go Round the Mulberry Bush
8. Row, Row, Row Your Boat
9. Shoo Fly, Don't Bother Me
10. The Wheels on the Bus

## SONG LIST

1. Ride, ride, ride your trike  
Pedal fast and slow  
Forward, backward, left or right  
Let's see where we go
2. When you go cruising outside  
Remember these rules on your ride  
Look both ways for trucks and cars  
Keep your hands on the handlebars  
Make sure that your shoes are tied  
Safety first while you ride!

3. The sun is shining, the air is sweet,  
On the pedals I put my feet,  
Feel the breeze blowing through my hair  
Let's ride our trike everywhere!
4. When you see a friend you know  
Stop your trike and say hello  
Ride here and there, go fast and slow  
All around the town
5. Let's ride around and visit different places  
We'll play at the park and make silly faces  
Let's go to school, to learn to read and write!  
At the supermarket, we'll get food for tonight!

## CARE & MAINTENANCE

1. Keep the unit clean by wiping it with a slightly damp cloth.
2. Keep the unit out of direct sunlight and away from any direct heat source.
3. Remove the batteries when the unit is not in use for an extended period of time.
4. Do not drop the unit on hard surfaces and do not expose the unit to moisture or water.

## TROUBLESHOOTING

If for some reason the program/activity stops working or malfunctions, please follow these steps:

1. Please turn the unit OFF.
2. Interrupt the power supply by removing the batteries.
3. Let the unit stand for a few minutes, then replace the batteries.
4. Turn the unit ON. The unit should now be ready to play again.
5. If the product still does not work, replace with a new set of batteries.

If the problem persists, please call our Consumer Services Department on 01235 546810 (from UK) or +44 1235 546810 (outside UK) and a service representative will be happy to help you.

### IMPORTANT NOTE:

Creating and developing **VTech®** products is accompanied by a responsibility that we take very seriously. We make every effort to ensure the accuracy of the information which forms the value of our products. However, errors sometimes can occur. It is important for you to know that we stand behind our products and encourage you to call our Consumer Services Department on 01235 546810 (from UK) or +44 1235 546810 (outside UK) with any problems and/or suggestions that you might have. A service representative will be happy to help you.

CLASS 1  
LED PRODUCT



## PRODUCT REGISTRATION

Visit [www.vtech.co.uk/clubvtech/login](http://www.vtech.co.uk/clubvtech/login)  
to register your VTech product

By joining the VTech Club you can also enter competitions, find out about news and events, seek expert advice for parents and let your kids play fun learning games and activities.



## PRODUCT WARRANTY

Thank you for choosing this quality product from VTech.  
We hope it will bring many hours of entertainment,  
imaginative play and learning.

1. The product detailed above is covered by a one year warranty from the date of purchase, against any defects in materials or workmanship.
2. The product may be returned to the place of purchase. Alternatively the product can be returned to VTech Electronics Europe plc (see address below), with proof of purchase, without proof of purchase no replacement will be provided.
3. VTech Electronics Europe plc will examine the product and if it is found to be defective due to faulty materials or workmanship, will replace the product at their discretion.
4. If the product covered by this warranty is damaged due to misuse, modification or unauthorised repair, or because of faulty batteries, battery discharge or incorrect electrical connections, then this warranty becomes void.
5. This warranty is personal to the original purchaser and is not transferable.
6. Breakages to the LCD screen are not covered by the warranty.
7. Returns to VTech Electronics Europe plc should include a cheque or postal order for £1.50 towards the cost of return postage and packaging.
8. Products returned to VTech Electronics Europe plc, should be addressed as follows and packed carefully to avoid damage in transit (Please do not include batteries or adaptor). Please include details of the fault together with your name and address.
9. To keep an online record of your warranty, please register your product online at [www.vtech.co.uk/warranty](http://www.vtech.co.uk/warranty)

Vtech Electronics EU PLC, c/o XPO Logistics, Warehouse 350, Cat & Fiddle Lane, West Hallam, DE7 6HE

THIS WARRANTY IS OFFERED AS AN EXTRA BENEFIT AND DOES NOT AFFECT CONSUMERS' STATUTORY RIGHTS.

This warranty is valid for the UK and Eire only. For products purchased outside the UK and Eire, please contact your local distributor or place of purchase.

**Visit our website for more  
information about our products,  
downloads, resources and more.**

***[www.vtech.co.uk](http://www.vtech.co.uk)***

